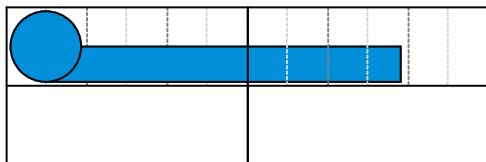
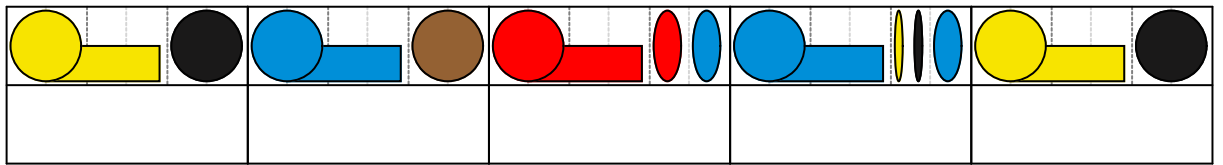
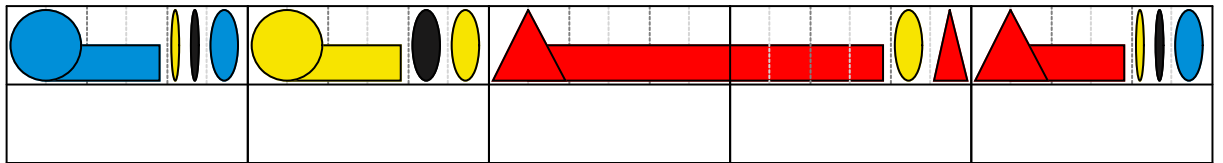
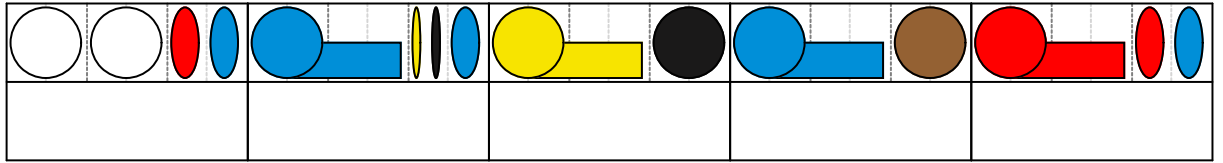
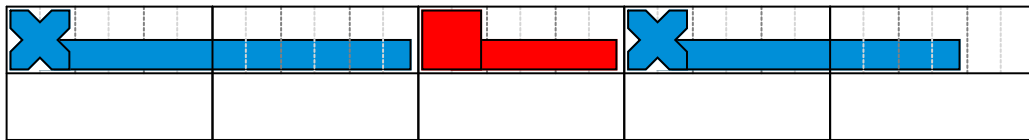
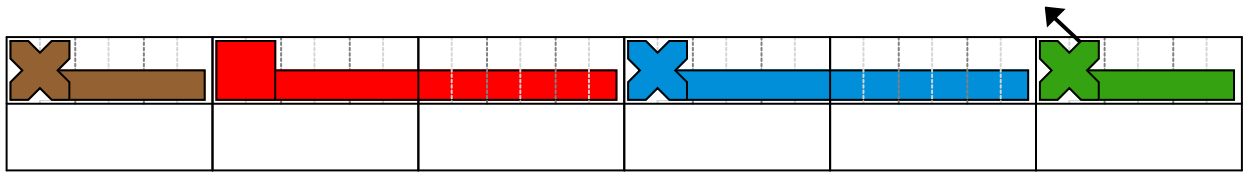
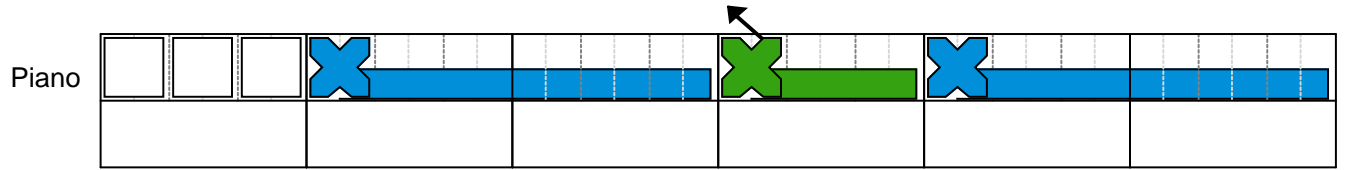


Amazing Grace Melody

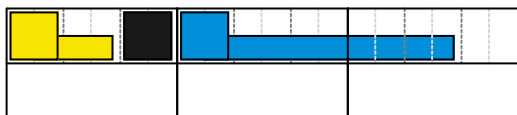
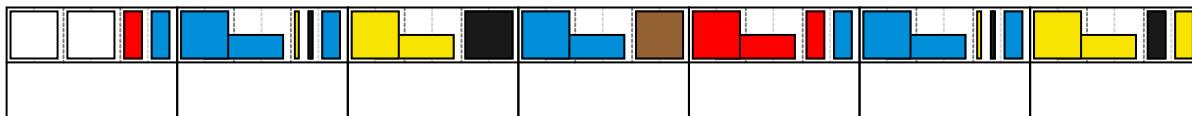


Amazing Grace Bass Line

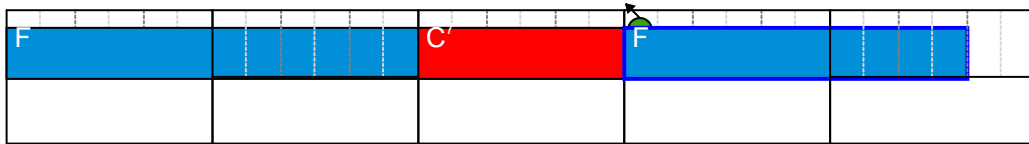
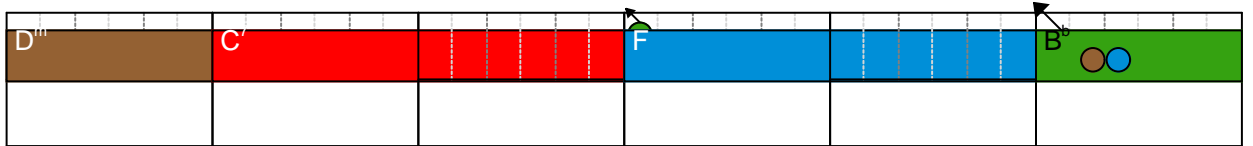
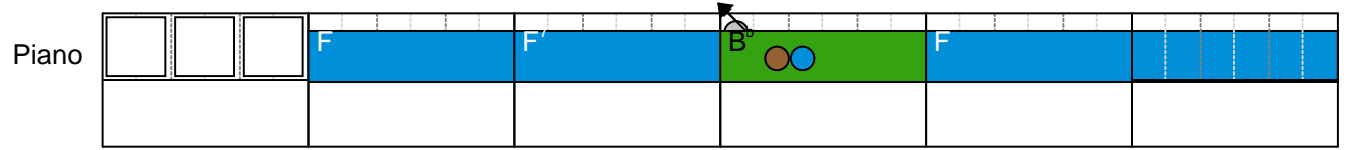


Amazing Grace Bass Melody

Piano



Amazing Grace Chords



Amazing Grace

Chords

♩ = 100

The image shows a single staff of music in bass clef, 3/4 time, with a tempo marking of ♩ = 100. The key signature has one flat (B-flat). The notation consists of 12 measures. The first measure is a whole rest. The following measures contain chords, with some chords held over multiple measures. The chords are represented by colored dots on the staff lines, indicating the notes of the chord. The sequence of chords is: B-flat major (measures 2-3), G major (measures 4-5), F major (measures 6-7), E-flat major (measures 8-9), D major (measures 10-11), and C major (measures 12-13). The final measure ends with a double bar line.