

Londonderry Air (Danny Boy)

Chords

Irish Air

♩ = 80

A musical staff in bass clef, 4/4 time, with a key signature of one flat (B-flat). The staff contains 14 measures of music. Each measure is represented by a vertical line with a chord symbol consisting of colored dots (red, blue, green, yellow, black) indicating the notes of the chord. The chords are: Measure 1: F2, C3, G2; Measure 2: F2, C3, G2; Measure 3: F2, C3, G2; Measure 4: F2, C3, G2; Measure 5: F2, C3, G2; Measure 6: F2, C3, G2; Measure 7: F2, C3, G2; Measure 8: F2, C3, G2; Measure 9: F2, C3, G2; Measure 10: F2, C3, G2; Measure 11: F2, C3, G2; Measure 12: F2, C3, G2; Measure 13: F2, C3, G2; Measure 14: F2, C3, G2.

15

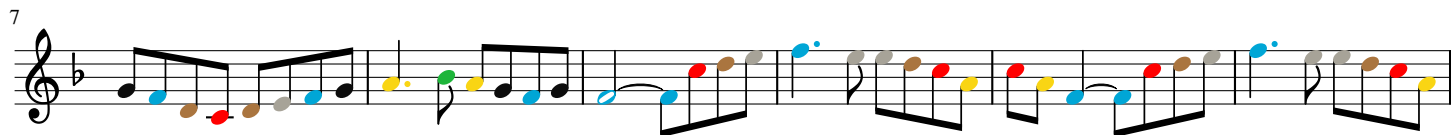
A musical staff in bass clef, 4/4 time, with a key signature of one flat (B-flat). The staff contains 4 measures of music. Each measure is represented by a vertical line with a chord symbol consisting of colored dots (red, blue, green, yellow, black) indicating the notes of the chord. The chords are: Measure 15: F2, C3, G2; Measure 16: F2, C3, G2; Measure 17: F2, C3, G2; Measure 18: F2, C3, G2.

Londonderry Air (Danny Boy)

Melody

Irish Air

$\text{♩} = 100$



Londonderry Air (Danny Boy)

Bass Line

Irish Air

♩ = 80

Musical notation for the first line of the bass line, measures 1-14. The notation is in bass clef, 4/4 time, and D major. The notes are: 1. Rest, 2. B2 (blue), 3. A2 (blue), 4. G2 (blue), 5. F2 (blue), 6. E2 (blue), 7. D2 (blue), 8. C2 (blue), 9. B1 (blue), 10. A1 (blue), 11. G1 (blue), 12. F1 (blue), 13. E1 (blue), 14. D1 (blue).

15

Musical notation for the second line of the bass line, measures 15-18. The notation is in bass clef, 4/4 time, and D major. The notes are: 15. C2 (blue), 16. B1 (blue), 17. A1 (blue), 18. G1 (blue).

Londonderry Air (Danny Boy)

Bass Melody

Irish Air

♩ = 100

