

The Bonnie Lass of Fyvie

Chords

♩ = 100

The image shows a single line of musical notation in bass clef, 4/4 time. The tempo is marked as ♩ = 100. The notation consists of 12 measures, each containing a chord represented by colored dots on the staff lines. The chords are: Measure 1: a whole rest; Measure 2: G2, B2, D3; Measure 3: G2, B2, D3; Measure 4: G2, B2, D3; Measure 5: G2, B2, D3, F#3; Measure 6: G2, B2, D3; Measure 7: G2, B2, D3; Measure 8: G2, B2, D3, F#3; Measure 9: G2, B2, D3, F#3; Measure 10: G2, B2, D3, F#3; Measure 11: G2, B2, D3, F#3; Measure 12: G2, B2, D3, F#3. The notation ends with a double bar line.

The Bonnie Lass of Fyvie

Melody

♩ = 100



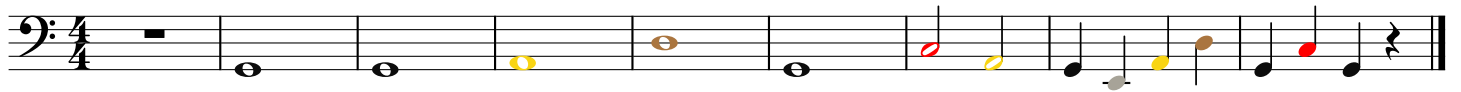
7



The Bonnie Lass of Fyvie

Bass Line

♩ = 100



The Bonnie Lass of Fyvie

Bass Melody

♩ = 100



8

