

Ding, dong bell

Bass melody

♩ = 100



8



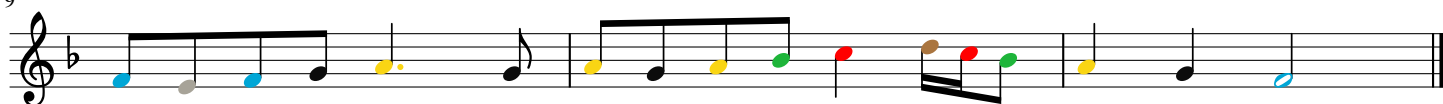
Ding, dong bell

Melody

♩ = 100



9



Ding, dong bells

Chords

♩ = 100

The musical notation is written on a single staff in bass clef with a 4/4 time signature. A tempo marking of ♩ = 100 is placed above the first measure. The chords are represented by colored dots on the staff lines, with a vertical line indicating the chord's position. The colors used are red, blue, yellow, and green. The sequence of chords across the 12 measures is as follows:

- Measure 1: Red (F2), Blue (C3), Yellow (G2), Green (C3)
- Measure 2: Red (F2), Blue (C3), Yellow (G2), Green (C3)
- Measure 3: Red (F2), Blue (C3), Yellow (G2), Green (C3)
- Measure 4: Red (F2), Blue (C3), Yellow (G2), Green (C3)
- Measure 5: Red (F2), Blue (C3), Yellow (G2), Green (C3)
- Measure 6: Red (F2), Blue (C3), Yellow (G2), Green (C3)
- Measure 7: Red (F2), Blue (C3), Yellow (G2), Green (C3)
- Measure 8: Red (F2), Blue (C3), Yellow (G2), Green (C3)
- Measure 9: Red (F2), Blue (C3), Yellow (G2), Green (C3)
- Measure 10: Red (F2), Blue (C3), Yellow (G2), Green (C3)
- Measure 11: Red (F2), Blue (C3), Yellow (G2), Green (C3)
- Measure 12: Red (F2), Blue (C3), Yellow (G2), Green (C3)