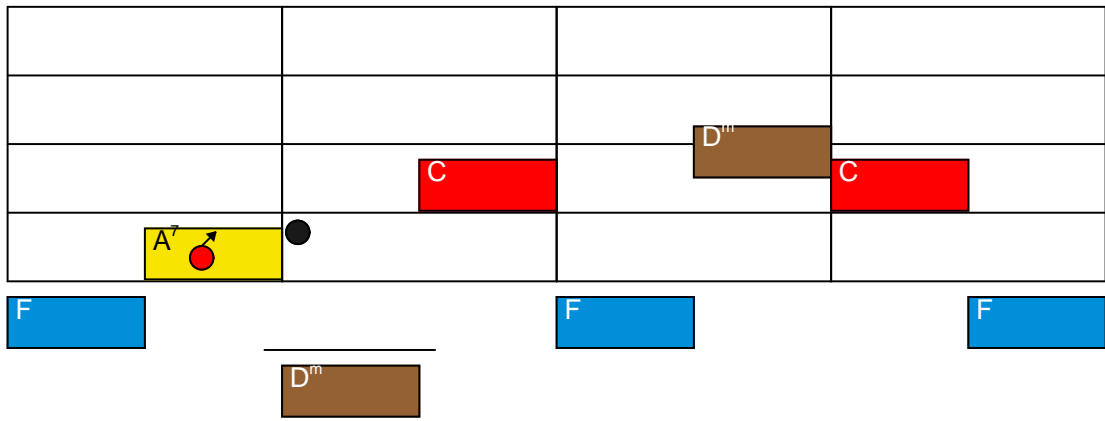
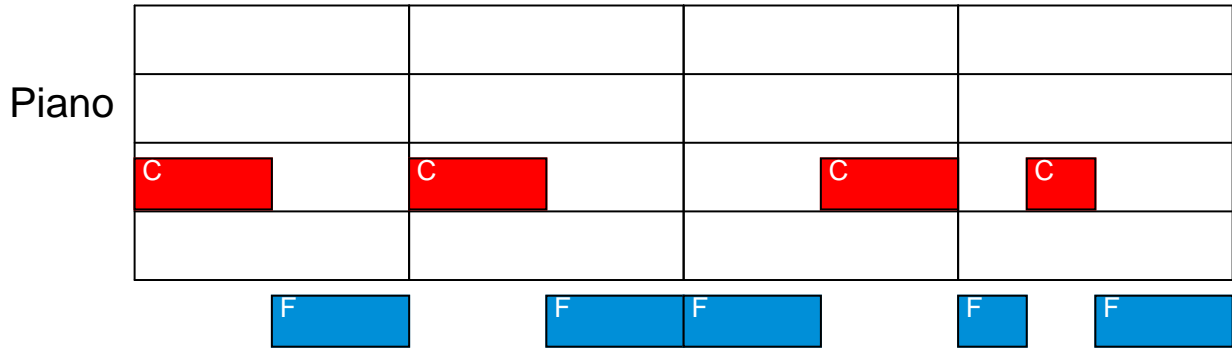
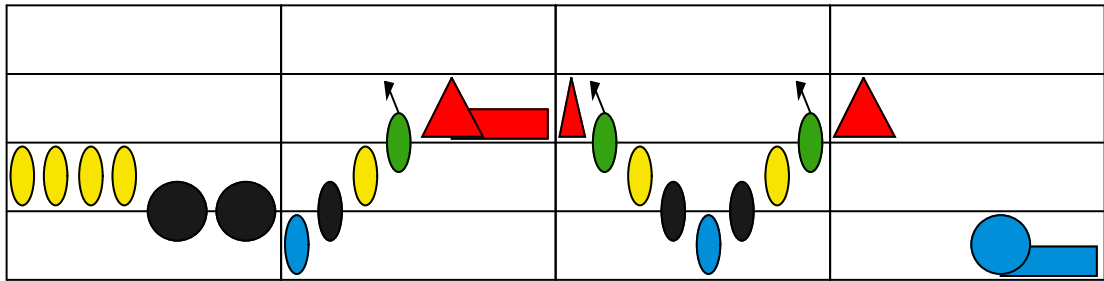
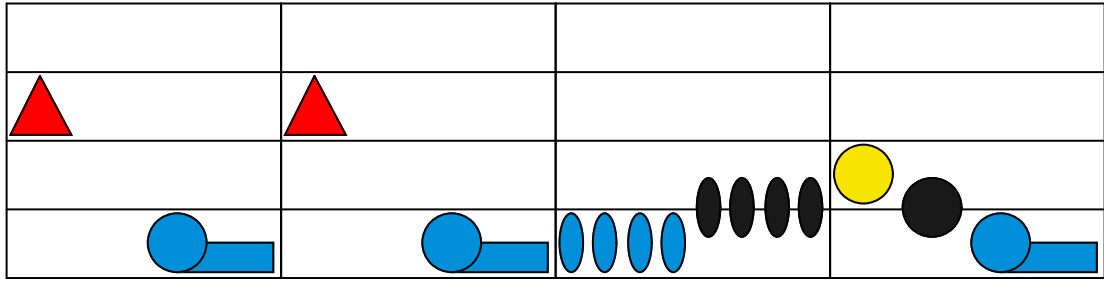


Hot Cross Buns Chords

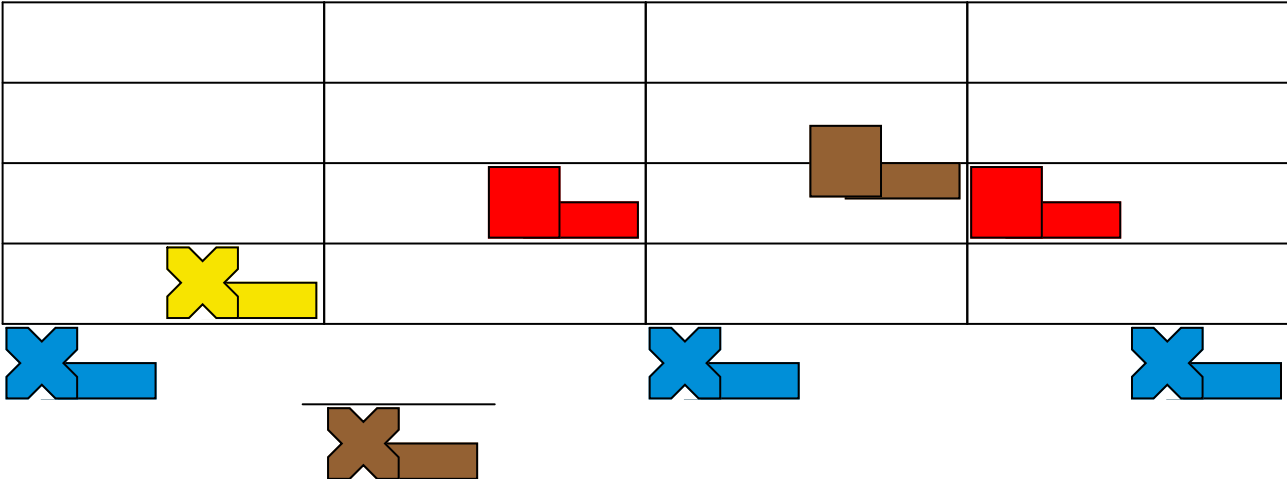
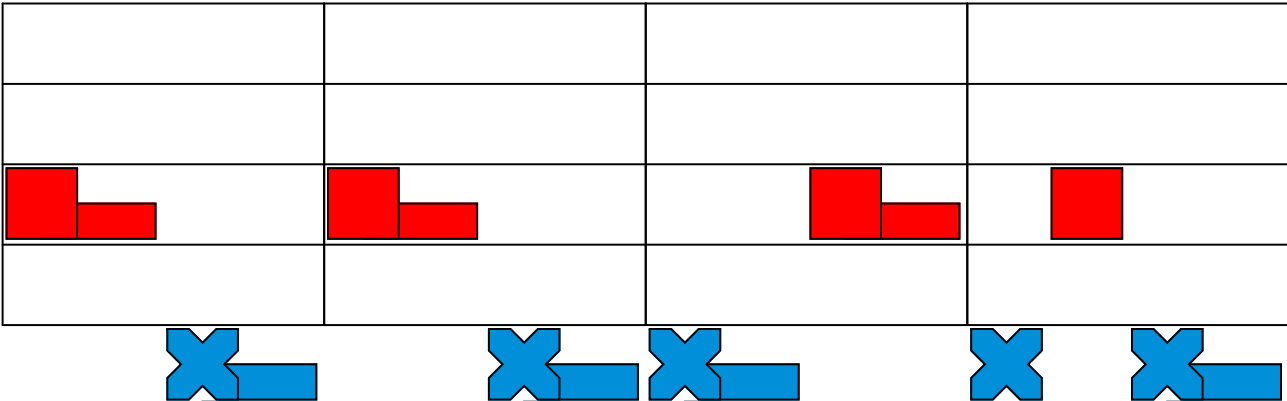


Hot Cross Buns



Hot Cross Buns Bass Line

Piano



Hot Cross Buns Bass Melody

Piano

The first system of piano accompaniment consists of four measures. The first two measures feature a red square in the second staff and blue rectangles in the first staff. The third measure contains blue rectangles in the first staff, black rectangles in the second staff, and a yellow square in the third staff. The fourth measure contains black rectangles in the first staff, blue rectangles in the second staff, and a black rectangle in the third staff. Above the first two measures are two red circles with horizontal lines passing through their centers.

The second system of piano accompaniment consists of four measures. The first measure has yellow rectangles in the first staff and black rectangles in the second staff. The second measure has a blue rectangle in the first staff, a black rectangle in the second staff, and a yellow rectangle in the third staff. The third measure has a green rectangle in the first staff, a yellow rectangle in the second staff, a black rectangle in the third staff, and a blue rectangle in the fourth staff. The fourth measure has a blue rectangle in the first staff, a black rectangle in the second staff, and a red square in the third staff. Above the second and fourth measures are red circles with horizontal lines, and above the third measure is a red oval with a horizontal line. Arrows point upwards from the green rectangles in the first and third measures.