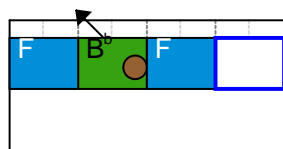
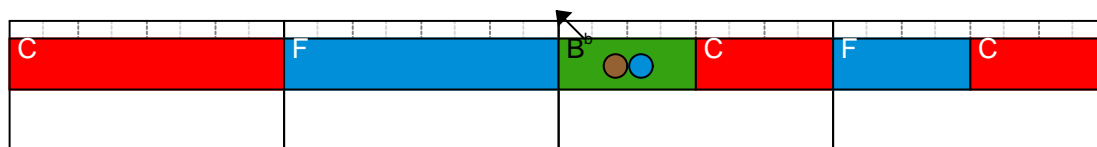
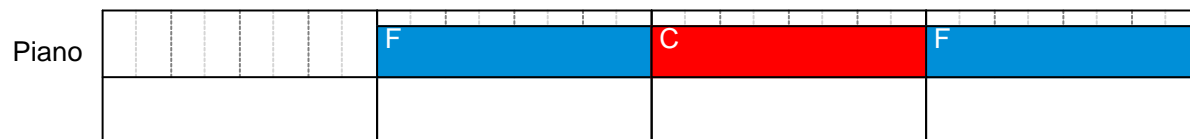
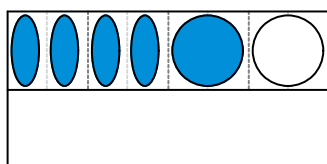
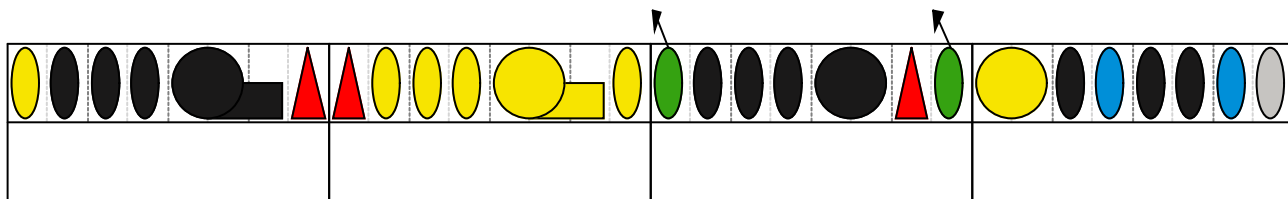
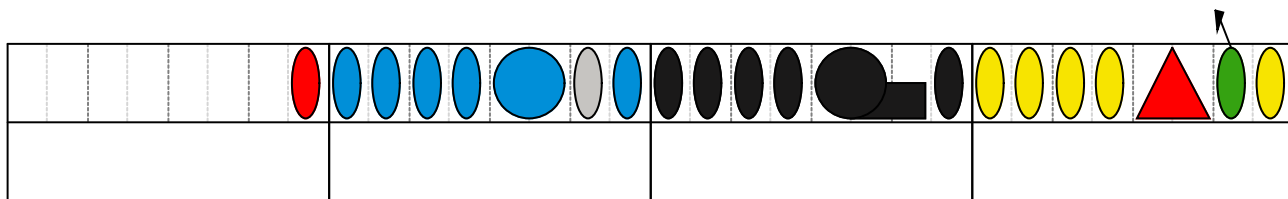


There was a crooked man Chords

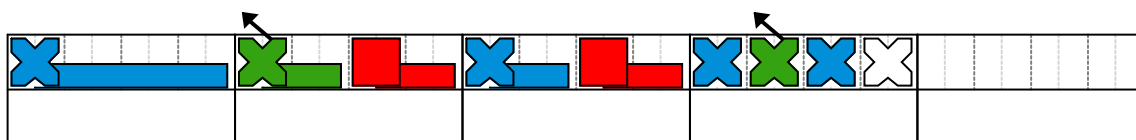


There was a crooked man Melody

Piano



There was a crooked man Bass line



There was a crooked man Bass Melody

Piano

The first staff of music is divided into four measures. The notes are represented by colored rectangles and a circle. Measure 1: four vertical dashed lines. Measure 2: a red vertical rectangle, followed by four blue vertical rectangles, and a blue square. Measure 3: a grey vertical rectangle, a blue vertical rectangle, and five black vertical rectangles. Measure 4: a black vertical rectangle, a black square, a black vertical rectangle, three yellow vertical rectangles, a large red circle, a green vertical rectangle, and a yellow vertical rectangle. An arrow points to the green vertical rectangle. Below the staff are four empty rectangular boxes.

The second staff of music is divided into four measures. Measure 1: a yellow vertical rectangle, two black vertical rectangles, a black square, a black vertical rectangle, and two red ovals. Measure 2: two yellow vertical rectangles, a yellow square, a yellow vertical rectangle, and a yellow square. Measure 3: a green vertical rectangle, three black vertical rectangles, a black square, a black vertical rectangle, a red oval, and a green vertical rectangle. An arrow points to the green vertical rectangle. Measure 4: a yellow square, a black vertical rectangle, a blue vertical rectangle, a black vertical rectangle, a blue vertical rectangle, and a grey vertical rectangle. Below the staff are four empty rectangular boxes.

The third staff of music is divided into two measures. Measure 1: four blue vertical rectangles and a blue square. Measure 2: an empty rectangular box. Below the staff is one empty rectangular box.