

Merrily to Bethlehem

Chords

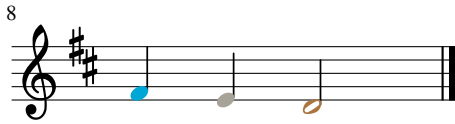
Polish Carol

The image shows a musical staff in bass clef with a 4/4 time signature. The key signature has two sharps (F# and C#). The staff contains ten measures of music, each represented by a vertical line with colored dots indicating the notes of a chord. The chords are: Measure 1: D2, F#2, A2, C#3; Measure 2: D2, F#2, A2, C#3; Measure 3: D2, F#2, A2, C#3; Measure 4: D2, F#2, A2, C#3; Measure 5: D2, F#2, A2, C#3; Measure 6: D2, F#2, A2, C#3; Measure 7: D2, F#2, A2, C#3; Measure 8: D2, F#2, A2, C#3; Measure 9: D2, F#2, A2, C#3; Measure 10: D2, F#2, A2, C#3.

Merrily to Bethlehem

Melody

Polish Carol



Merrily to Bethlehem

Bass Line

Polish Carol



Merrily to Bethlehem

Bass Melody

Polish Carol

