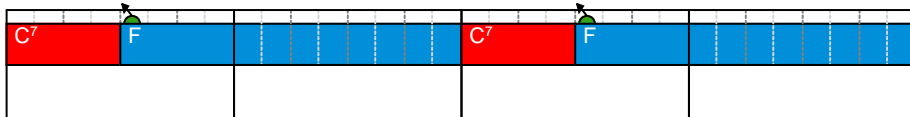
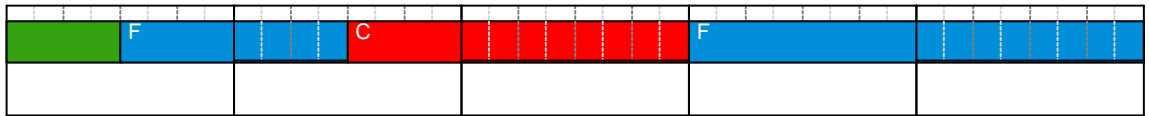
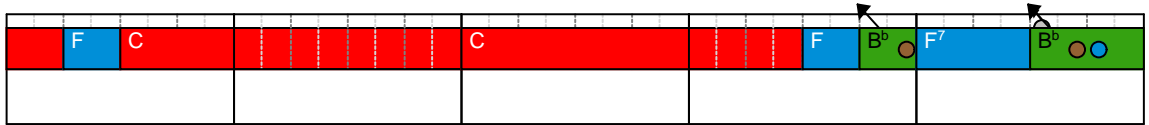
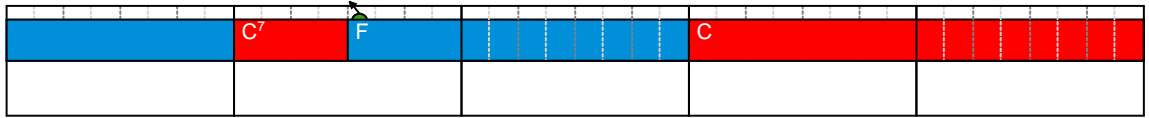
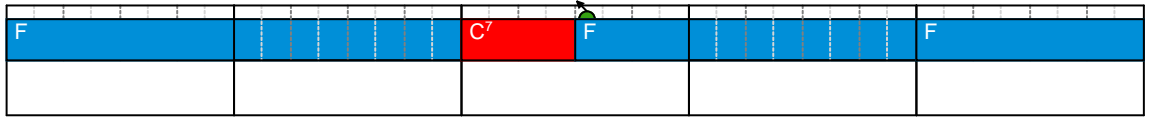


The Little Drummer Boy Chords

Piano



The Little Drummer Boy Melody

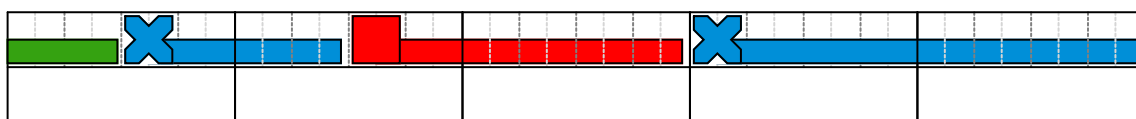
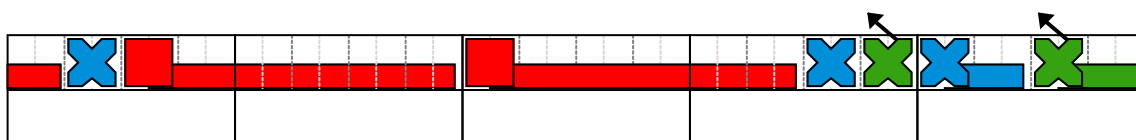
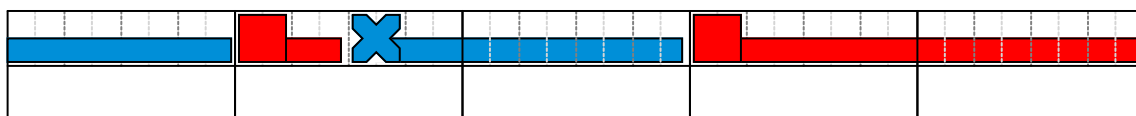
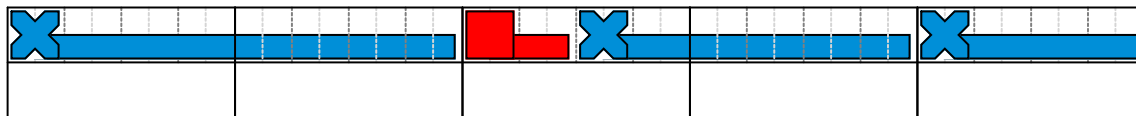
Piano

The figure notation for 'The Little Drummer Boy' is as follows:

- Line 1 (Piano):**
 - Measure 1: Blue circle, blue bar, black circle.
 - Measure 2: Yellow circle, yellow bar, yellow circle, yellow circle.
 - Measure 3: Green circle, yellow circle, green circle, yellow circle.
 - Measure 4: White circle, blue circle, blue circle, black circle.
- Line 2:**
 - Measure 1: Yellow circle, yellow circle, yellow circle, yellow circle.
 - Measure 2: Green circle, yellow circle, yellow circle, yellow circle.
 - Measure 3: White circle, black circle, yellow circle, green circle.
 - Measure 4: Red triangle, red triangle, red triangle, brown triangle.
- Line 3:**
 - Measure 1: Red triangle, yellow circle, black circle, black bar.
 - Measure 2: White circle, black circle, yellow circle, green circle.
 - Measure 3: Red triangle, red triangle, red triangle, brown triangle.
 - Measure 4: Red triangle, brown triangle, red triangle, green circle.
- Line 4:**
 - Measure 1: Brown triangle, red triangle, green circle, yellow circle.
 - Measure 2: Red triangle, yellow circle, black circle, black bar.
 - Measure 3: Blue circle, blue bar, black circle, yellow circle.
 - Measure 4: Yellow circle, yellow circle, yellow circle, yellow circle.
- Line 5:**
 - Measure 1: Green circle, yellow circle, yellow circle, yellow circle.
 - Measure 2: Black circle, blue circle, blue bar.

The Little Drummer Boy Bass Line

Piano



The Little Drummer Boy Bass Melody

Piano

The figure notation consists of five lines of rhythmic notation, each divided into four measures. The notation uses colored rectangles and circles of various sizes and orientations to represent notes and rests. Arrows point to specific notes in several measures. The colors used include blue, black, yellow, green, white, red, and brown.